

# Monitoring EMC VNX Storage Systems

The EMC VNX storage system is a market leader in mid-range storage solutions for the enterprise. It includes both file and block storage options to support both SAN and NAS. Enterprise customers and managed service providers who manage large storage systems can use the ScienceLogic PowerPack for EMX VNX to improve their overall storage system performance and availability. The PowerPack delivers out-of-the-box monitoring templates, event definitions, and dashboards that save considerable time and effort in establishing a broad monitoring capability across their EMC VNX storage infrastructure.

## ScienceLogic EMC VNX PowerPack—Monitoring Capabilities

By monitoring their EMC VNX storage systems with ScienceLogic, customers can achieve:

- Automatic discovery of EMC VNX devices and subsystems
- Significantly improved visibility leading to reduced MTTR for VNX-related problems
- Early warning of potential problems from system and subsystem events
- Real-time dashboard views of VNX storage system availability, performance and capacity
- Live component mapping showing complete storage system topology and health
- Ability to forecast storage utilization trends to identify potential future capacity bottlenecks

## Deep Visibility into Over 200 Key Metrics

Configuration
Number of component devices
Storage Processor model and OE revision
LUNs/Volumes per Storage Pool
LUN Name, Size, ID, Owning Processor, Status & WWN

Array Performance
Read & Write IOPs
Read & Write MB/s
Total & Free Capacity

Storage Processor Performance
Processor Utilization
Read & Write IOPs
Read & Write MB/x
Interface Port IOPs and MB/s

Storage Pool & RAID Group Performance
Total, Free & Used Capacity

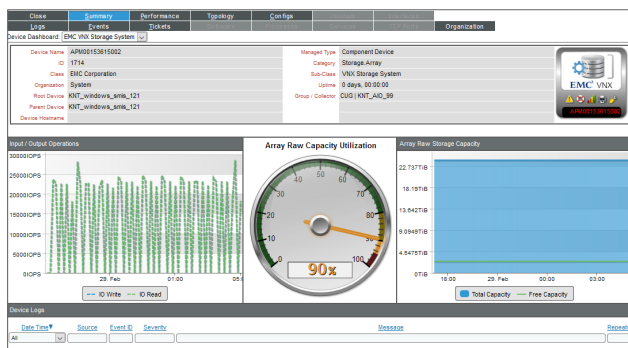
LUN Performance
Read & Write IOPs
Read & Write MB/s
Utilization %
Service Time



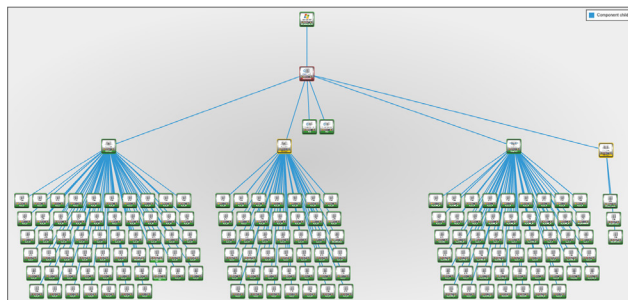
## Multi-user Dashboards

Provide multiple views to different stakeholders based on their role within the organization.

Dashboard screen examples:



Pre-built real-time Dashboards make complex metrics visible



Real-time Topology Map shows EMC VNX Arrays, Controllers, Storage Pools and LUNs

## About ScienceLogic

ScienceLogic delivers the next generation IT monitoring platform for the network of everything. Over 20,000 global service providers, enterprises, and government organizations rely on ScienceLogic every day to significantly enhance their IT operations.

Our industry-leading platform delivers:

- Complete hybrid IT monitoring, with a single holistic view
- Total visibility for Amazon Web Services (AWS) and other mainstream cloud services
- 1,500+ PowerApps for extended device and applications coverage

With ScienceLogic's platform, customers can maximize efficiency, optimize operations, and ensure business continuity. We deliver the scale, security, automation, and resiliency necessary to simplify the ever-expanding task of managing IT resources, services, and applications that are in constant motion.