

Monitoring Citrix XenCenter and XenServer

Citrix XenServer is a virtualization solution provided by Citrix Systems, which consolidates a physical server's computing power into multiple virtual machines, each emulating a standalone server. Citrix XenServer supports Windows and Linux operating systems on guest server machines. Through its virtual machine monitoring component, Citrix XenServer manages the allocation and distribution of physical server compute resources among virtual machines and administers their performance and use.

Citrix XenCenter is the management console for XenServer and runs on Windows. This lets administrators configure new virtual machines and enables full virtual machine installation, configuration, administration, and lifecycle management.

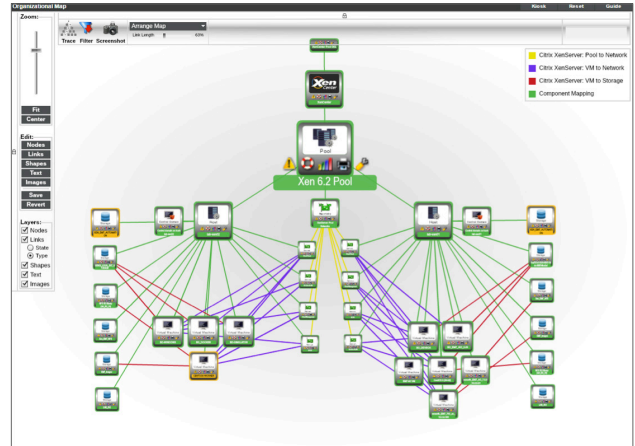
ScienceLogic XenCenter PowerPack

The ScienceLogic XenCenter PowerPack provides scalable management and monitoring of multiple XenServer systems through an interface that logically resembles the XenCenter tool. ScienceLogic uses the XenServer API to extract metrics and configurations from the XenServer environment, and works with both commercial and open-source versions of XenServer**

With the ScienceLogic XenCenter PowerPack, customers can:

- Automatically discover XenServer hosts and virtual machines
- Reduce MTTR for XenServer virtualization and cloud environments
- Achieve early warning of potential problems from virtualization component events
- View real-time dashboards of XenServer host and VM availability and performance
- Map relationships for complete XenCenter Pool including XenServer hosts, VMs and storage

Discovery and Dependency Mapping for XenServer



Live Dependency Map shows XenServer Pool Relationships between Hosts, VMs and storage

Summary of XenServer Metrics

The XenCenter PowerPack collects statistics on over 200 XenServer host and VM metrics including the following categories:

- XenServer Host statistics including CPU, interface and memory usage
- XenServer Host network interface TX/RX statistics
- XenServer Host storage usage statistics
- Virtual Machine availability and performance

Monitoring Features

Embedded Event Policies [9]			
Event Policy Name	JIP	Type	Severity
1. Citrix XenCenter: Storage Consumed Capacity Exceeded Critical Threshold	disabled	Dynamic	Critical
2. Citrix XenCenter: Storage Consumed Capacity Exceeded Major Threshold	disabled	Dynamic	Major
3. Citrix XenCenter: Storage Consumed Capacity Returned to Normal Levels	disabled	Dynamic	Healthy
4. XenCenter: Control Domain Power State is Halted	disabled	Dynamic	Critical
5. XenCenter: Control Domain Power State is Suspended	disabled	Dynamic	Critical
6. XenCenter: Control Domain Power State Returned to Running	disabled	Dynamic	Healthy
7. XenCenter: VM Power State is Halted	disabled	Dynamic	Major
8. XenCenter: VM Power State is Suspended	disabled	Dynamic	Notice
9. XenCenter: VM Power State Returned to Running	disabled	Dynamic	Healthy

View XenCenter and XenServer Events for VM and Storage Status and Threshold Conditions

** Note – there may be minor feature differences between commercial and open source variants

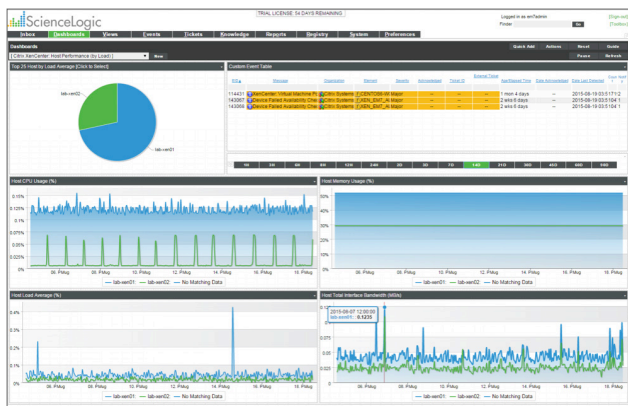


Pre-built XenCenter and XenServer Dashboards

The XenCenter PowerPack includes four pre-built device summary dashboards for XenCenter elements and three pre-built dashboards included for XenServer performance.



XenCenter device summary dashboard shows dials for current conditions and trends on historical performance



XenServer Top Hosts with drilldown to individual host performance

About ScienceLogic

ScienceLogic delivers the next generation IT monitoring platform for the network of everything. Over 20,000 global service providers, enterprises, and government organizations rely on ScienceLogic every day to significantly enhance their IT operations.

Our industry-leading platform delivers:

- Complete hybrid IT monitoring, with a single holistic view
- Total visibility for Amazon Web Services (AWS) and other mainstream cloud services
- 1,500+ PowerApps for extended device and applications coverage

With ScienceLogic’s platform, customers can maximize efficiency, optimize operations, and ensure business continuity. We deliver the scale, security, automation, and resiliency necessary to simplify the ever-expanding task of managing IT resources, services, and applications that are in constant motion.