

ScienceLogic SL1 Colosseum Release: 1H 2020

Shifting from ITOps to AIOps

Your business is facing a data challenge today—the sheer variety, volume, and velocity of operational data coming at you is impossible for humans to understand, much less manage. With the Colosseum release, ScienceLogic addresses this challenge head-on by enabling IT teams to shift from ITOps to AIOps: from **Observability** to **Advisability** and **Actionability**. Unleash the full potential of your data by leveraging AI/ML-based Behavioral Correlation to fully understand risk of business impact, quickly diagnose root cause, and execute recommended actions to avoid service outages. Keep pace with the rapidly evolving needs of your business as you move closer to Automated Intelligent Operations (AIOps).



See

- Enhanced Agent-based Server Monitoring (Solaris, AIX)
- SDK for Agentless collection (REST, SSH CLI, JMX, Prometheus/OpenMetrics)



Contextualize

- ML-based Anomaly Detection
- Behavioral Correlation
- Improved Application & Service Views



Act

- Automating IT workflows with low-code/no-code
- Enhanced Automation Library: triage and remediation
- Recommended actions

Build Your Modern Data Lake

The shift from ITOps to AIOps starts with **Observability**. Building your SL1 Data Lake establishes a solid foundation. With this release, you can continue to assimilate data from your ever-expanding IT estate via agent-based and agentless collection methods. The SL1 Colosseum release expands your ability to quickly and easily monitor an even broader set of cloud, microservices-based, legacy, and unique technologies and applications.

Enhanced Agent-Based Server Monitoring

- Deepen diagnostic data collection from your environment—monitor [Solaris, AIX, Windows, & Linux](#)
- [Configure and manage Agents centrally](#) along with the rest of your components


Simplified Data Collection with New and Updated PowerPacks

<p>Speed-up and simplify PowerPack development with low/no-code SDK</p>	<p>Expand monitoring of cloud and modern technologies</p>	<p>Extend visibility across app layer</p>
---	---	---

Leverage AI/ML for Insight

Next step in the AIOps journey is gaining **Advisability**. With every component of your heterogeneous IT environment spewing massive amounts of data, it is humanly impossible to sift through the noise and avoid service-impacting issues. SL1 already gives you powerful context on how various components in your environment relate to each other. The SL1 Colosseum release now leverages the power of AI/ML to keep a pulse on your environment and identify any unusual behavior. SL1 then correlates these anomalies along with events within and across your service topology to instantly highlight risks and cause, and advise you on possible next steps. Keep the clutter at bay, instantly zero-in on service impact and root cause, and proactively execute best-practice recommendations to ensure optimal service health.

Proactive Problem Identification & Faster Diagnostics with ML-Based Anomaly Detection



Automatically track
anomalous behavior

Proactively alert
on anomalies

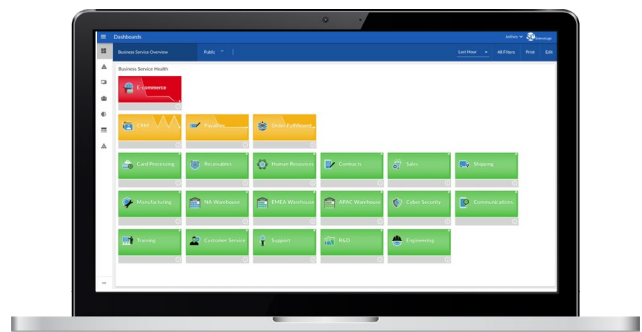
Speed-up
Diagnostic Workflows

Holistic Service Health with *ML-Driven* Behavioral Correlation

- Combine **events, anomalies and topology** from across service-impacting IT estate
- Speed-up diagnosis and remediation using library of **recommended actions** and automated workflows
- Machine Learning algorithms are chosen automatically and applied directly to performance data

Improved Visibility with Enhanced Application & Service Views & Mapping

- Instantly detect issues through service views that dynamically correlate events, anomalies and topologies
- Work with ease and personalize your experience with HTML5 maps (Flash replacement), **enhanced UI customization** (themes, logos, background colors etc.), layout and filtering options



Move Fast With Automations

Equipped with real-time insights from across your environment, it's time to take action. Manual workflows are prone to human-error and costly delays, and are simply not cut out to help businesses move at the desired velocity that today's dynamic environments demand. The SL1 Colosseum release gives you the **Actionability** to quickly diagnose and remediate issues before they impact your business. While equipping you with a vast library of industry best-practice troubleshooting and remediation workflows; SL1 goes even further to recommend multi-step actions that can be executed with a single click. SL1 Colosseum also introduces a new low code no code approach for building custom workflows. Start automating routine actions today to proactively address risk, speed-up diagnostics and remediation, and take control of your service health.

Accelerate Workflow Development with Automation Library

350+ automation workflows for diagnostics & remediation covering network, OS & virtualization components. New and updated technologies include [Linux](#), [Windows](#), [Cisco UCS-C](#), [Dell EMC](#), [Hyber-V](#).

Reduce MTRR with **185+ one-click Recommended Actions** for Remediation

Faster Workflow Automation with Drag-n-Drop PowerFlow Builder

Gain speed and simplicity with [low/no-code IT automation workflow designer](#)

```

self.resolve_state = self.get_parameter('resolve_state')
incidents = self.get_data_from_step_by_name('Get Incidents')
for all_user in self.get_data_from_step_by_name('Query Available Users'):
    self.all_user_domain[all_user.get('domain')] = all_user
    self.default_ah_id = None
for event in self.get_data_from_step_by_name('Query Available Events'):
    self.all_unacked_events[all_event.get('event')] = event
for change in startNode.chain(ch_request, ch_task):
    for device in change.get('device'):
        self.create_opposed(
            {
                "id": device.get('id'),
                "region": device.get('region'),
                "ch_name": change.get('name'),
                "ch_start": change.get('planned_start_date'),
                "ch_end": change.get('planned_end_date'),
                "ch_status": change.get('status'),
                "ch_short_description": change.get('short_description')
            }
        )
                    
```

Without PowerFlow

With PowerFlow

- [Download PowerPacks](#)
- [Subscribe to Portal Updates](#)
- [Access Documentation](#)
- [Watch Videos](#)